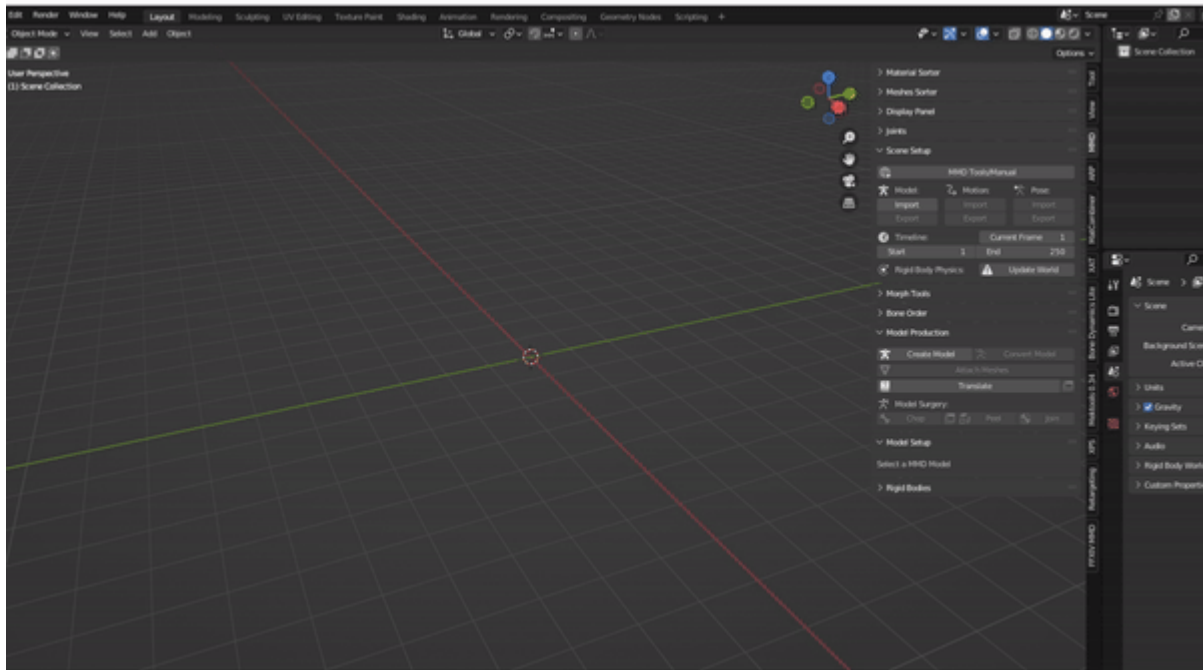


Loading in the MMD Model

1. Locate/open the MMD Tool menu and find the Scene set up section.
2. Click on the Import button in the Model section.
3. Find your MMD model.
4. Before clicking the import model file, there are a few settings that will need to be adjusted.
 - Scale - MMD models can come in a variety of sizes. To determine the closest size that roughly fits the FFXIV model, go to this sub chapter.
 - Enable the following settings:
 - Remove Doubles
 - Fix IK Links
 - Apply Bone Fixed Axis
 - Rename Bones - User under score
 - In the Rename bones to English, click on the drop down menu and select Internal Directory.



Revision #1

Created 20 August 2024 17:49:19 by KT_Arima

Updated 20 August 2024 17:51:12 by KT_Arima